



UR FOG
SECURITY FOGGING SYSTEMS



**CONFIGURATION MANUAL WITH
AJAX ALARM CONTROL PANEL**

SUMMARY

Activation settings of motion sensors	_____	page 2
Manual Activation after photo verification	_____	page 13
Antipanic / Anti-robbery function	_____	page 15
Multi confirmation shoot settings	_____	page 18
Notes	_____	page 22

ATTENTION:

before proceeding with the configuration of the fogging system it is necessary to set the **AJAX** alarm control panel and the related sensors / accessories.

It is also advisable to verify that the desired position for the fogging generator falls within the radio coverage range of the Jeweller **AJAX** hub.

IMPORTANT: the fog shooting time must **ALWAYS** be programmed by the fog device system and **NOT** by this application!

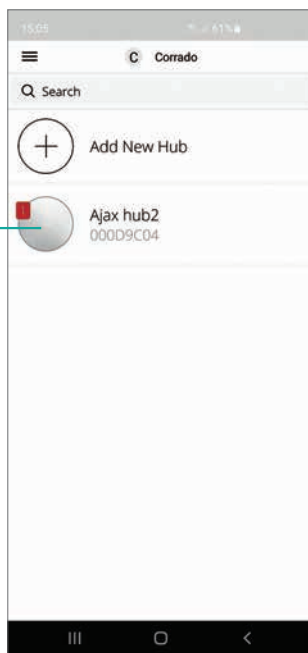
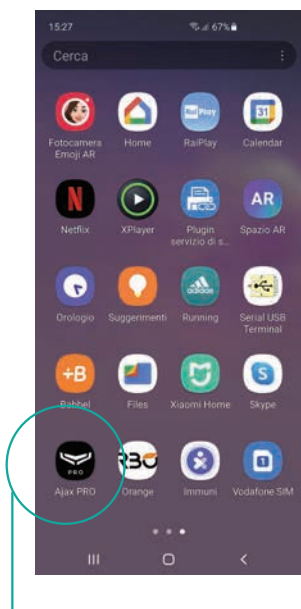


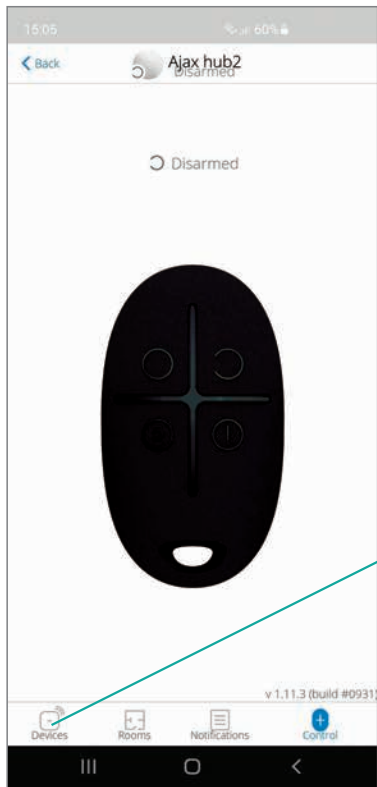
1

Unscrew the four side screws of the plastic front panel and remove it to access the electronic board

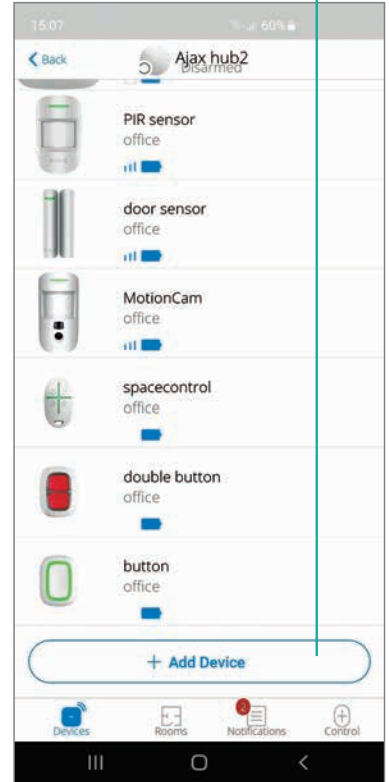
2

Open the application and select the installed hub

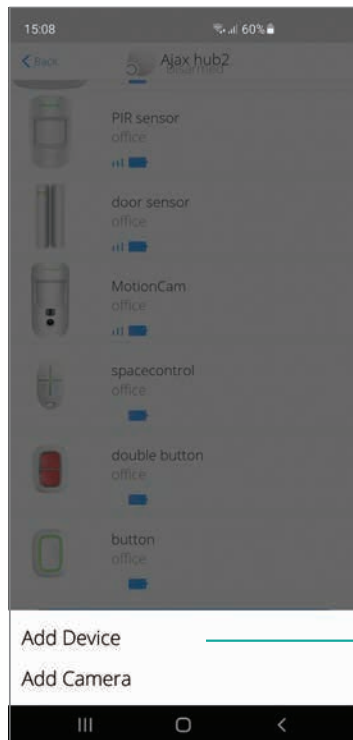




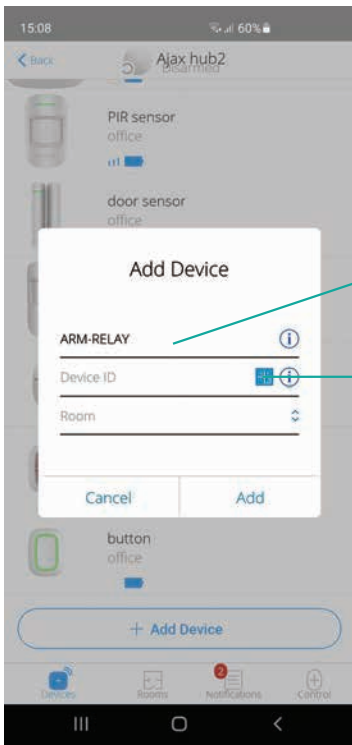
3 Select the icon at the bottom left
“DEVICES”



4 Click
“ADD DEVICE”



5 Select the item
“ADD DEVICE”

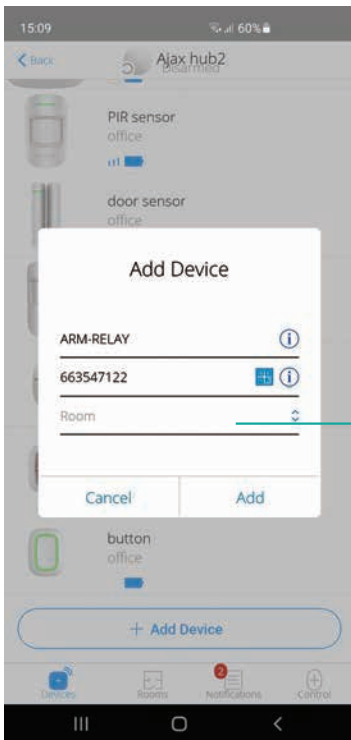


6 Enter "**ARM-RELAY**" as the device name

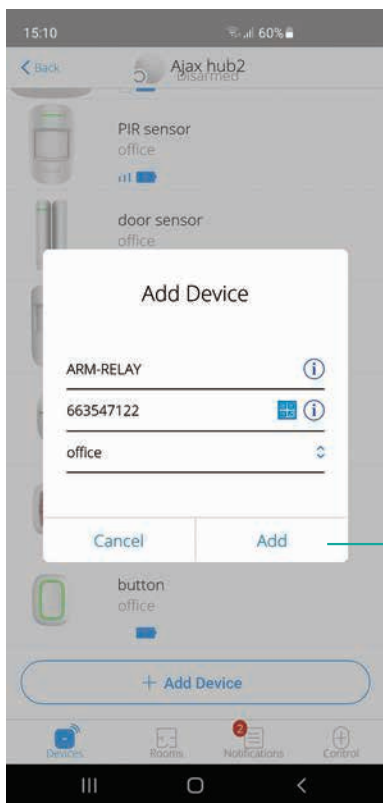
Select the **QR CODE** icon



7 Place the camera of your Smartphone in front of the **QR CODE** to acquire, automatically, the ID of the relay device

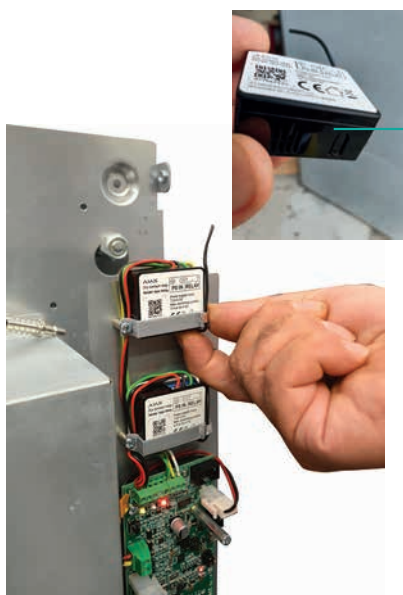
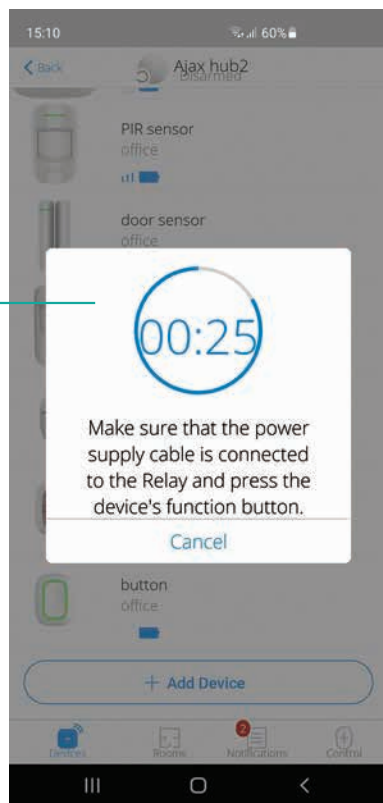


8 Select the "**ROOM**" previously configured on the hub



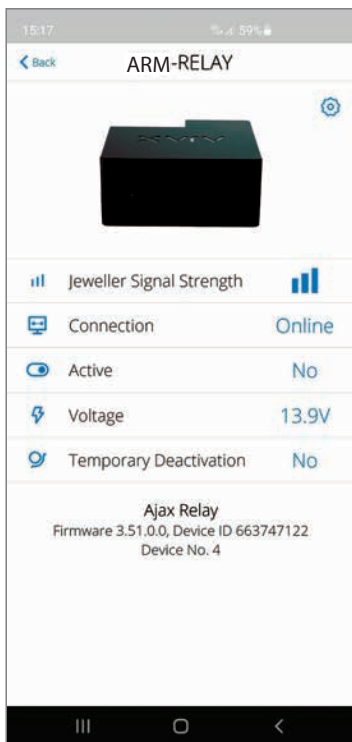
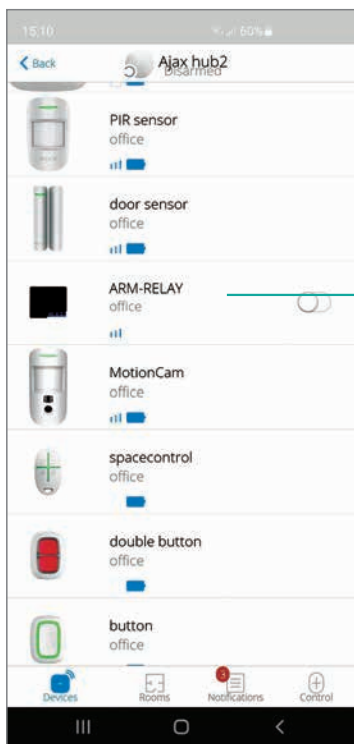
9 Click **"ADD"** to continue the installation process

10 At this point a countdown of 30 seconds will be activated within which you will have to press the function button of the device located on the lower right part of the relay



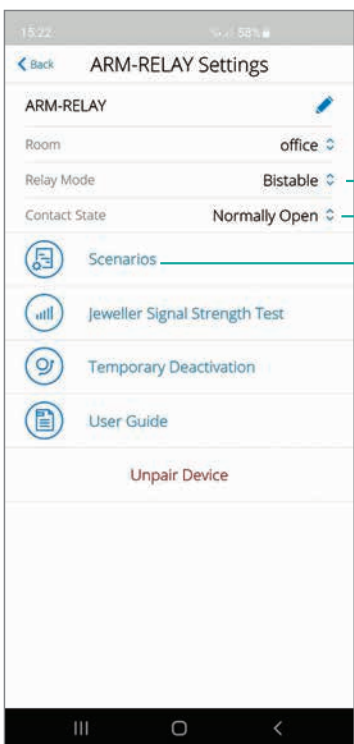
11
ATTENTION:
the button is covered with a plastic protection

12 A summary screen will confirm that the relay has been installed



13

Once the device “**ARM-RELAY**” has been selected, the configuration screen will appear. Click on the wheel at the top right

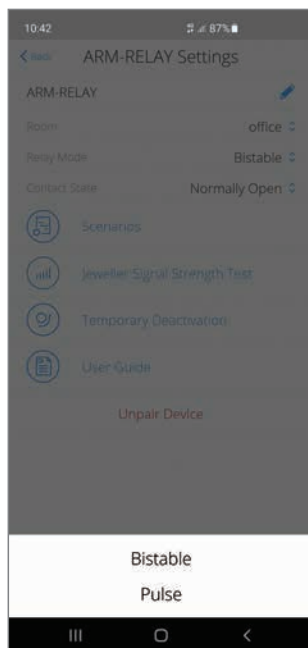


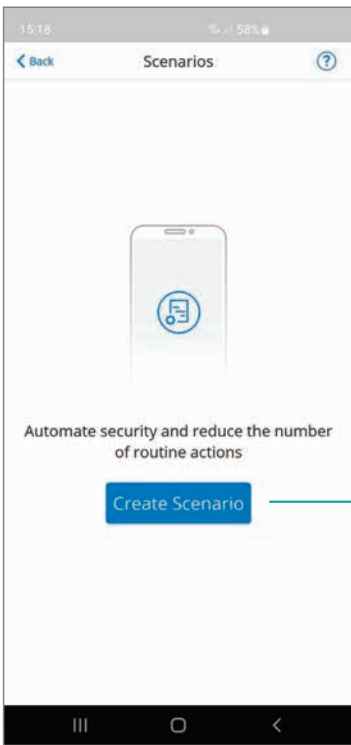
14

Make sure that you have selected the following parameters:

- relay mode: **BISTABLE**
- contact status **NORMALLY OPEN**

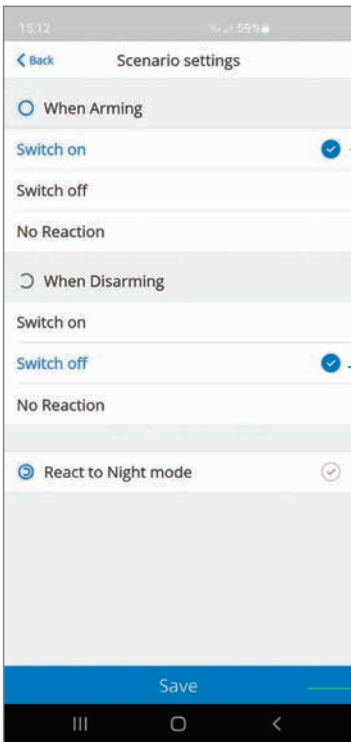
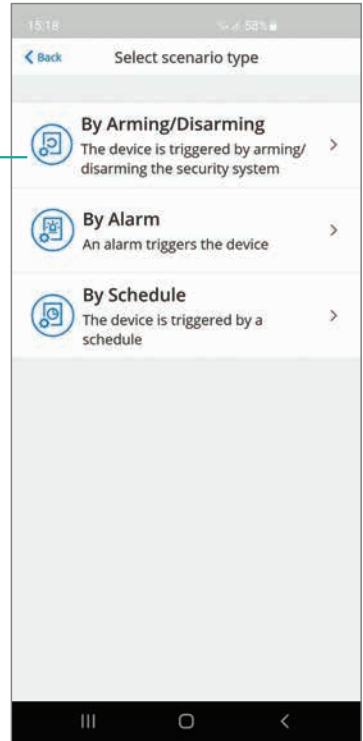
Select the item “**SCENARIOS**”





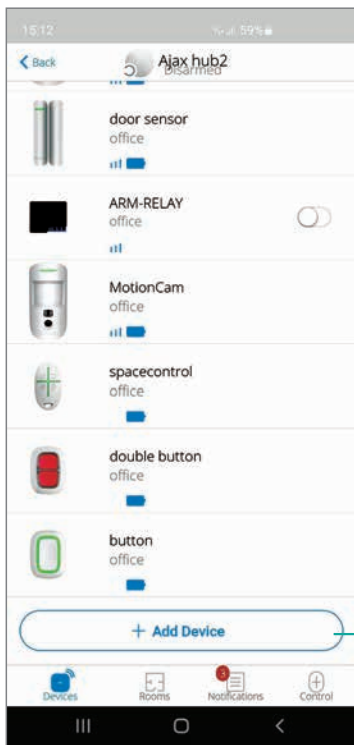
15 Select the item **“CREATE SCENARIO”**

16 Select the item **“BY ARMING/DISARMING”**



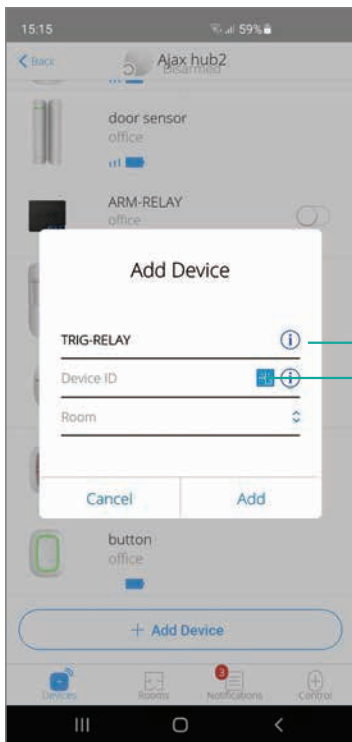
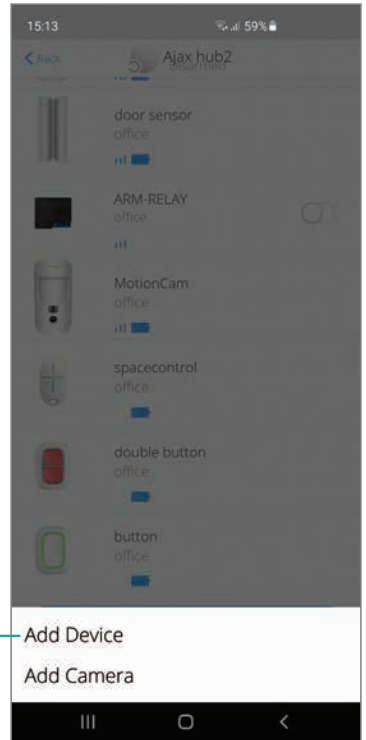
17
Set the following conditions:
- when arming **SWITCH ON**
- when disarming **SWITCH OFF**

SAVE



18 Click
"ADD DEVICE"

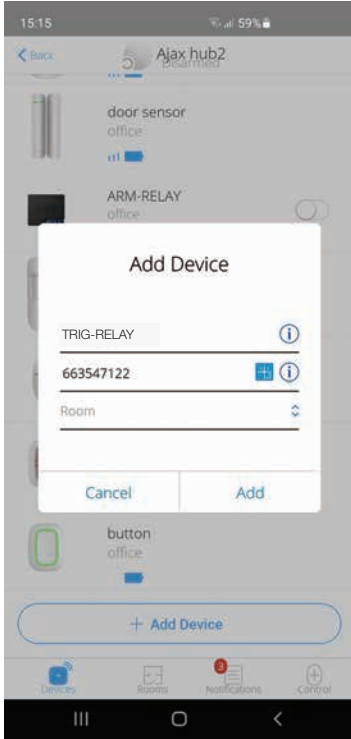
19 Select the item
"ADD DEVICE"



20 Enter "TRIG-RELAY"
as the device name

Select **QR CODE** icon

21 Place the camera of your Smartphone in front of the **QR CODE** to acquire, automatically, the ID of the relay device

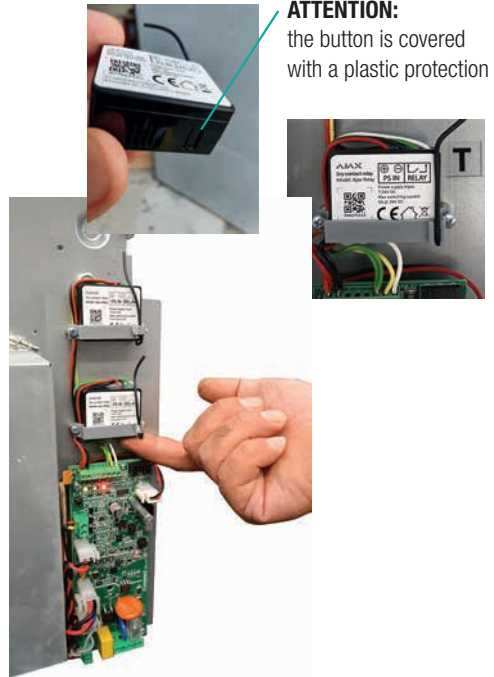
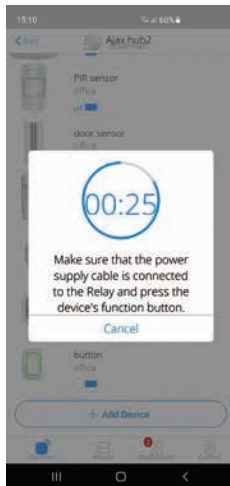


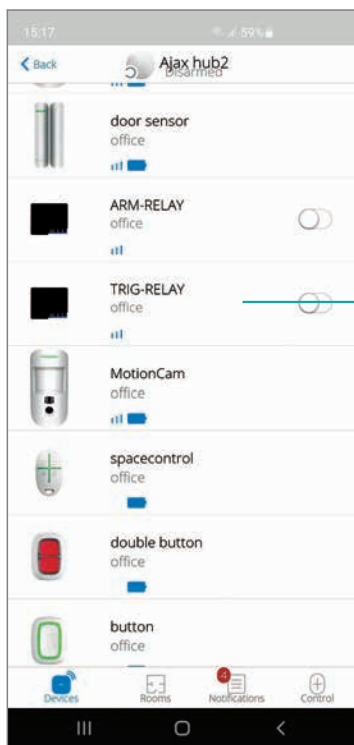
22

Select the same **"ROOM"** previously configured on the hub

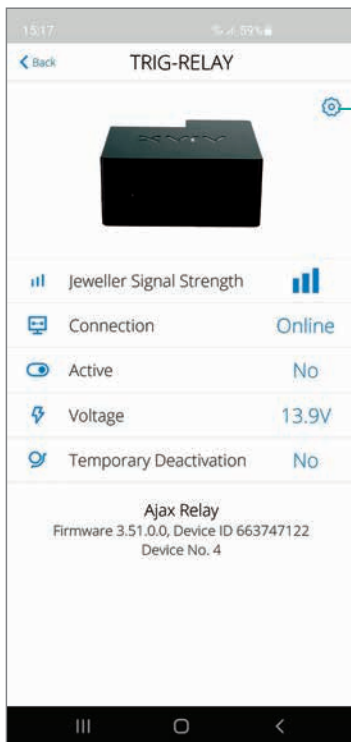
Click **"ADD"** to continue the installation process

At this point a countdown of 30 seconds will be activated within which you will have to press the function button of the device located on the lower right part of the relay



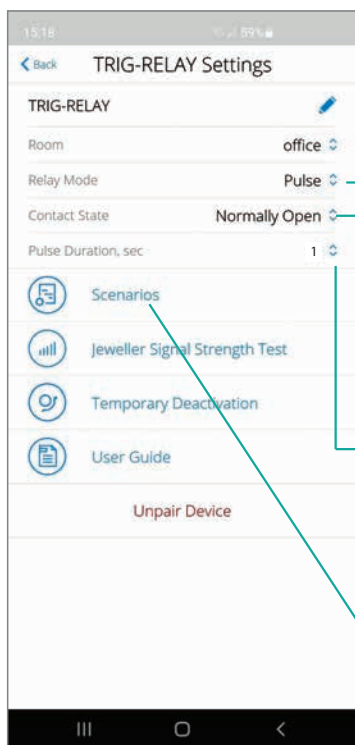


23 A summary screen will confirm that the relay device has been installed



24

Once the device “**TRIG-RELAY**” has been selected, the configuration screen will appear. Click on the wheel at the top right

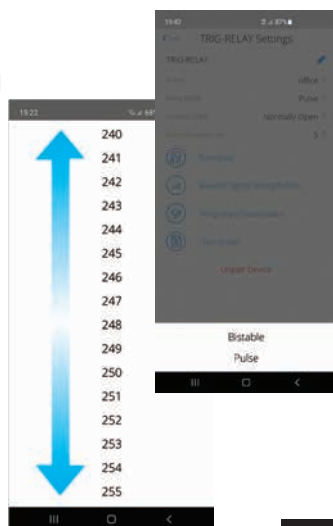


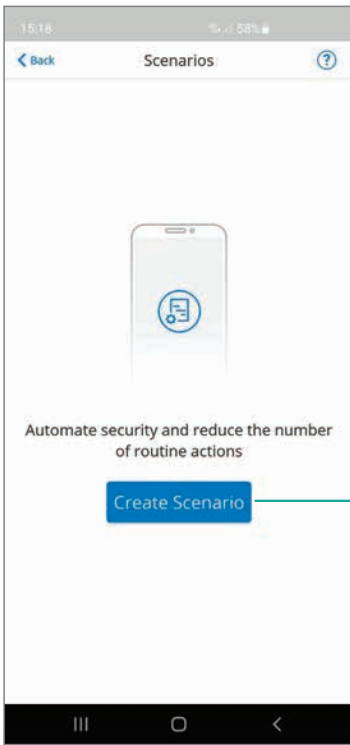
25

Make sure that you have selected the following parameters:

- **PULSE** mode
- contact status **NORMALLY OPEN**
- Pulse Duration, sec: from 0 to 255
Minimum certain value: 1 s
(set the maximum value of 255 seconds if you do not want repeated shots)

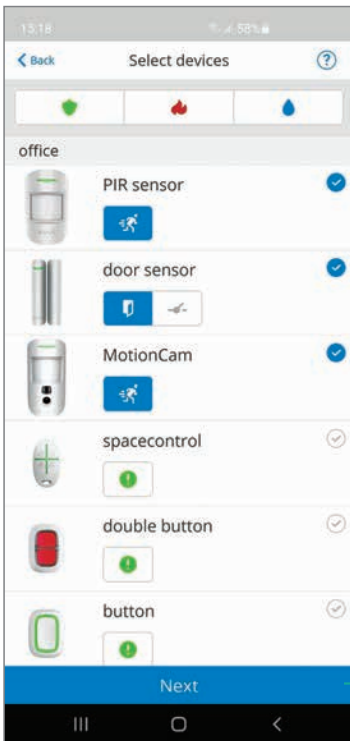
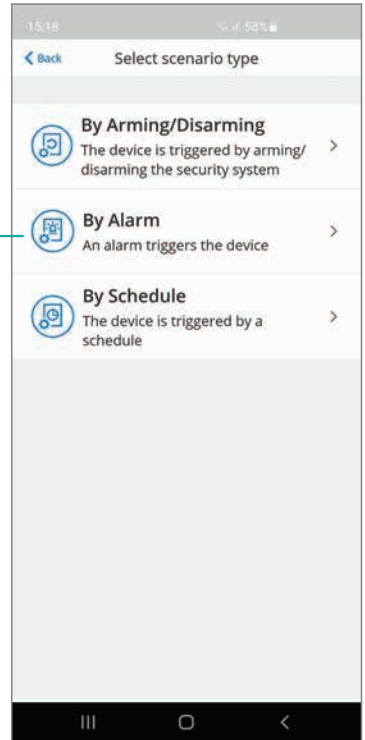
Select the item “**SCENARIOS**”



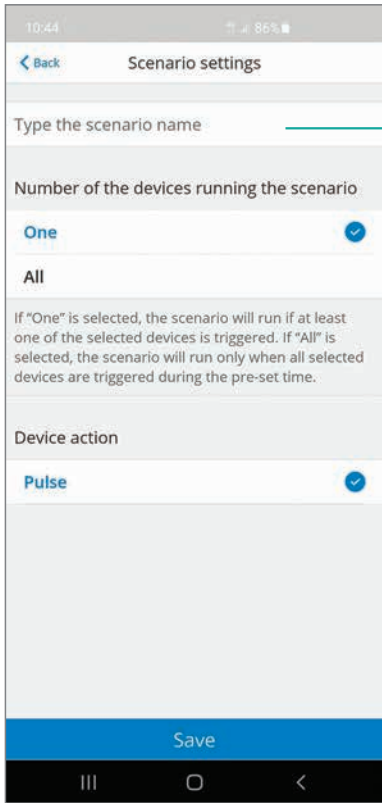


26 Select the item **“CREATE SCENARIO”**

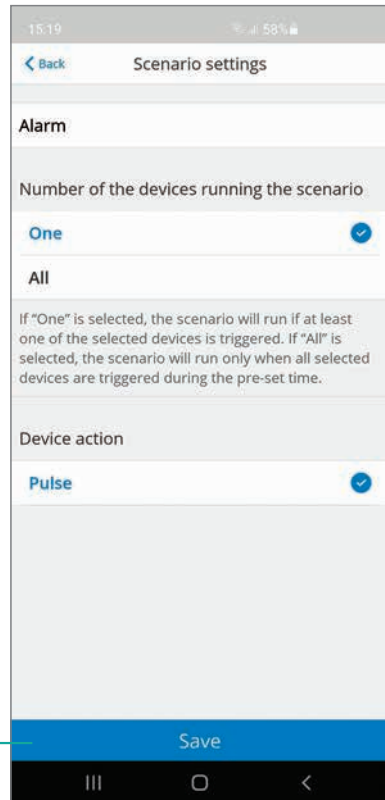
27 Select the item **“BY ALARM”**



28 Select the sensors/devices that send **“SHOOTING SIGNAL”** in the event of an alarm and click on **“NEXT”**



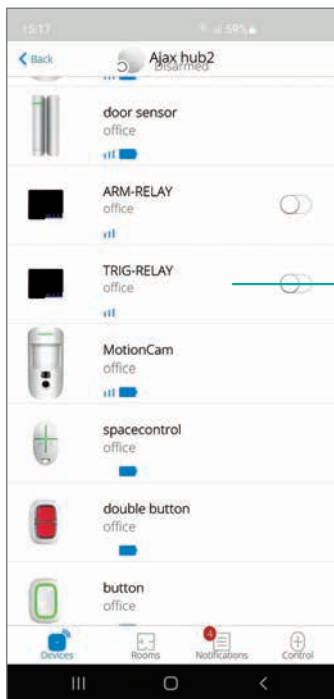
29 **TYPE THE NAME OF THE SCENARIO** (e.g. Alarm) and select "ONE" as device number to activate that scenario



30 Click on "SAVE"

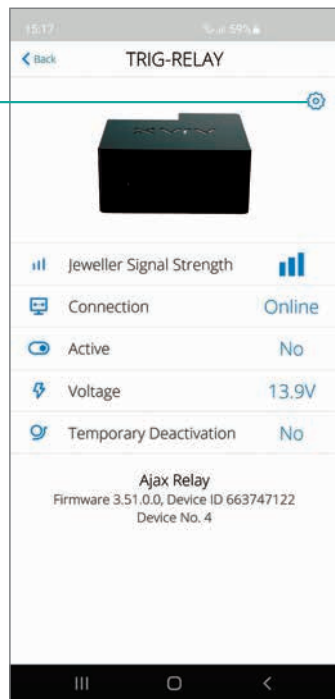
MANUAL ACTIVATION OF THE FOGGING SYSTEM AFTER PHOTO VERIFICATION

Configuration:



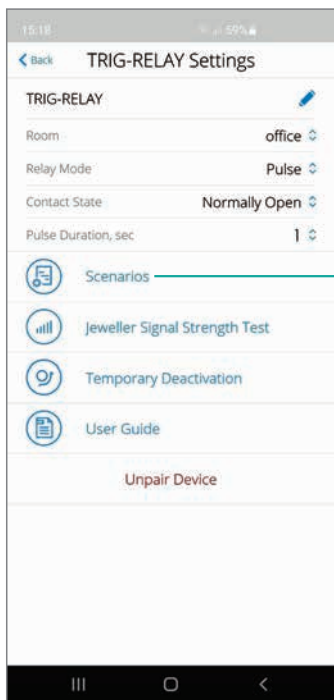
DELETE FROM THE TRIG-RELAY ALL SCENARIOS THAT MAY BE CREATED:

1 Select the "TRIG-RELAY" component from the devices menu



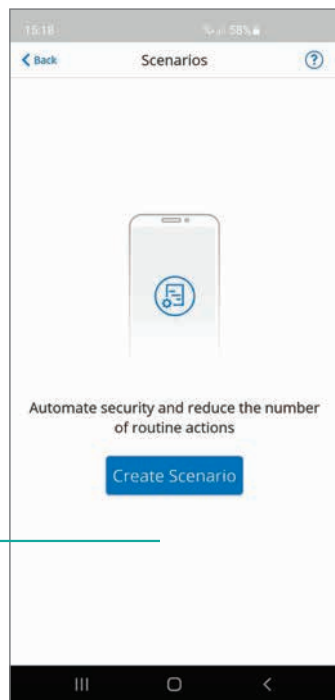
2

Once the device "TRIG-RELAY" has been selected, the configuration screen will appear. Click on the wheel at the top right



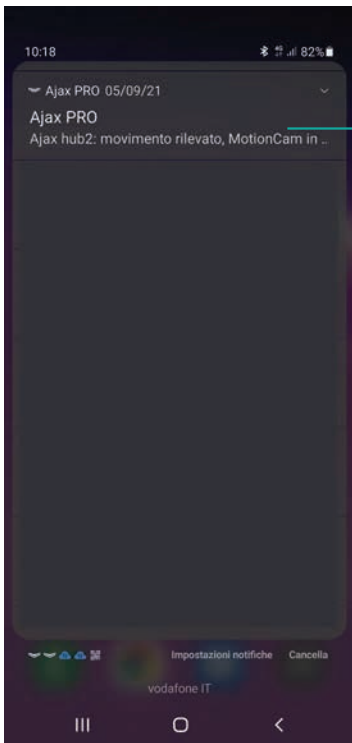
3

ATTENTION: select the item **SCENARIOS** and make sure that the screen is blank



4

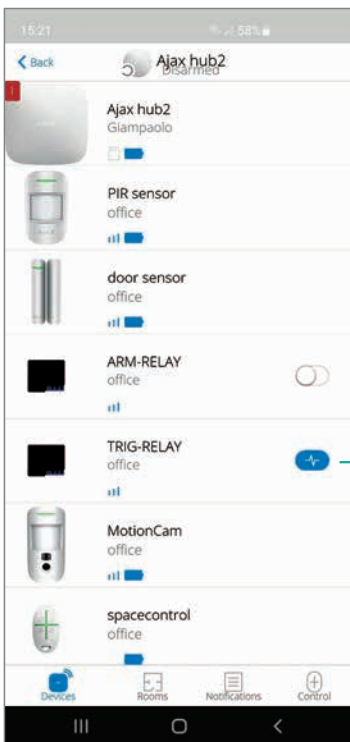
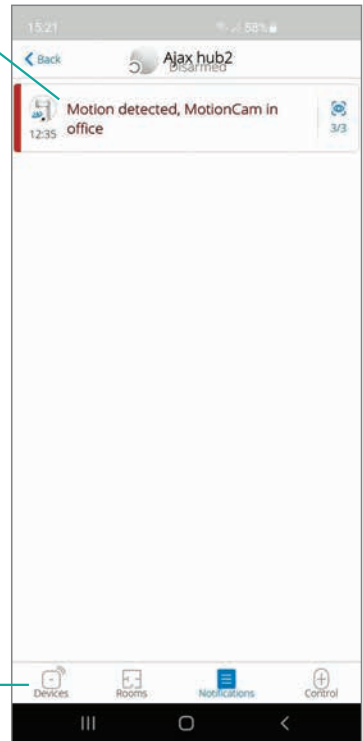
If there are previously set scenarios, proceed with their elimination



5 When the **MotionCam** detects a movement it sends, through the Ajax alarm control panel, a notification. Clicking on the notification will open the control screen of the Ajax Pro App

6 By clicking on the **MOTION DETECTED** it will be possible to view the images of the Room

Select the **DEVICES** item at the bottom left



7 Click on the symbol to the right of the **"TRIG-RELAY"**

NOTE:

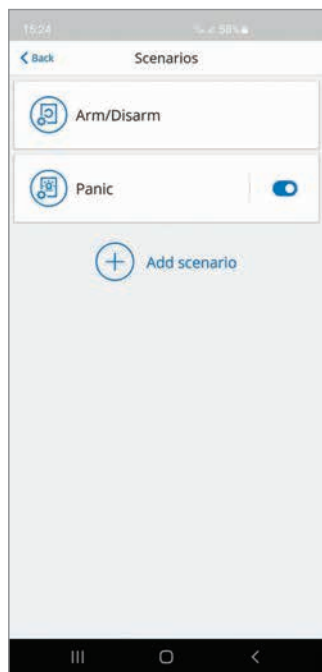
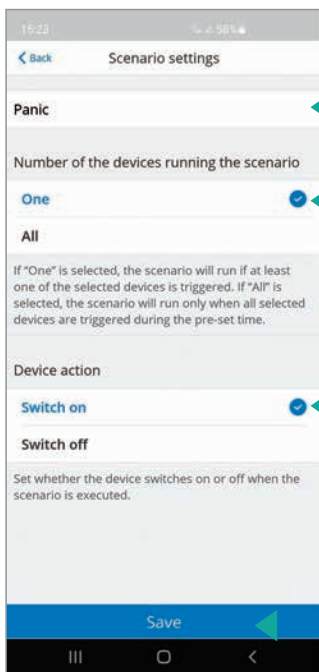
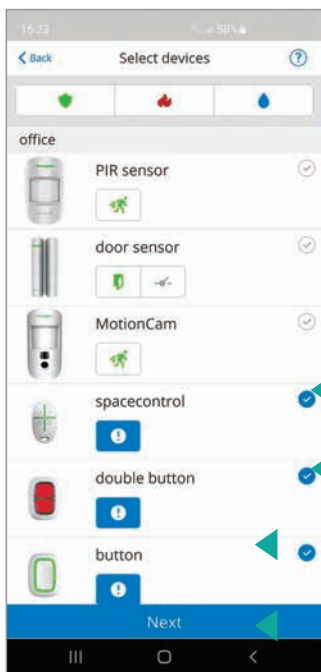
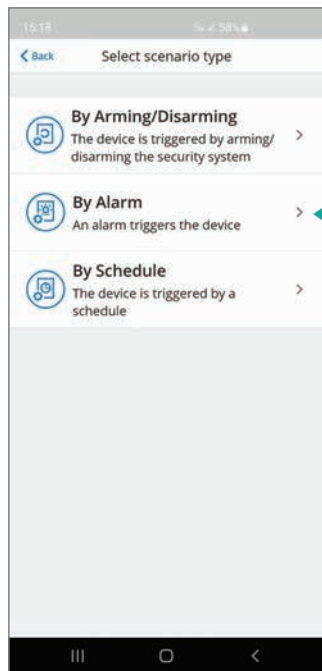
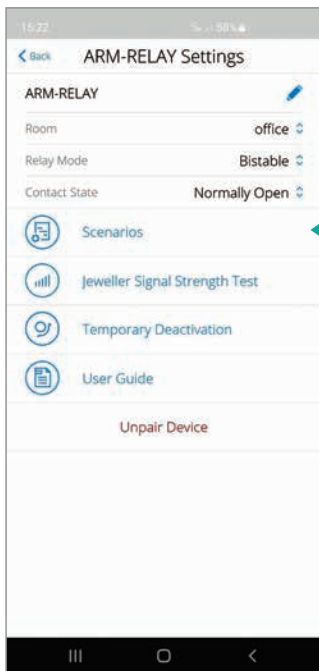
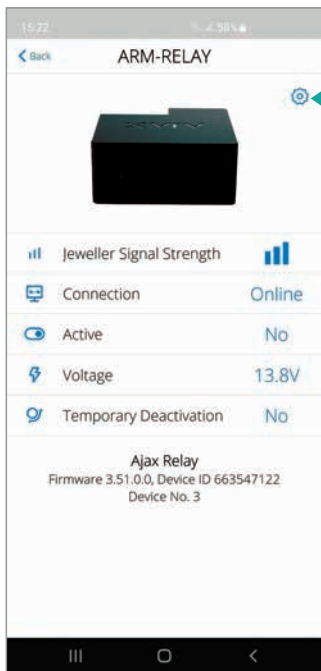
The manual activation of the fogging system takes place only if the system is armed

ANTI-PANIC FUNCTION

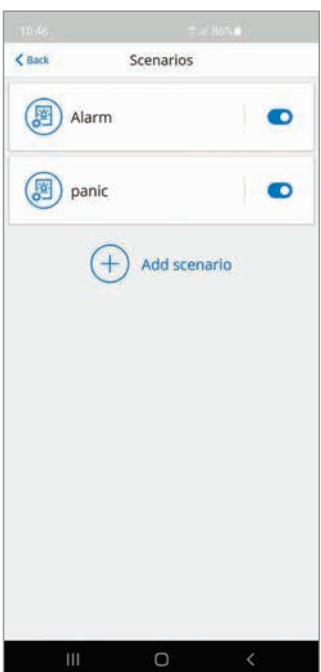
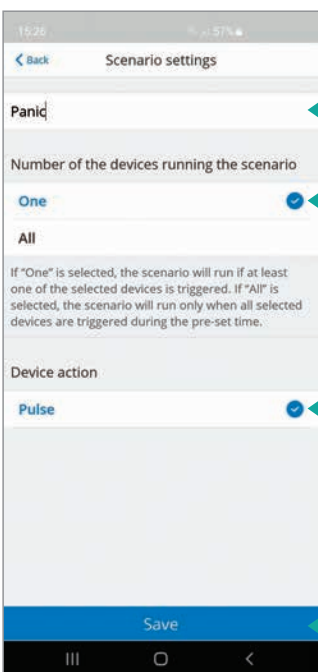
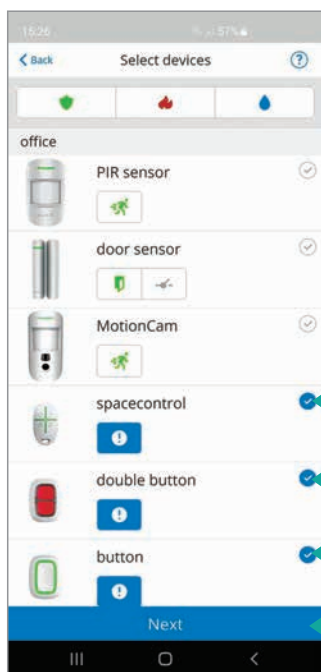
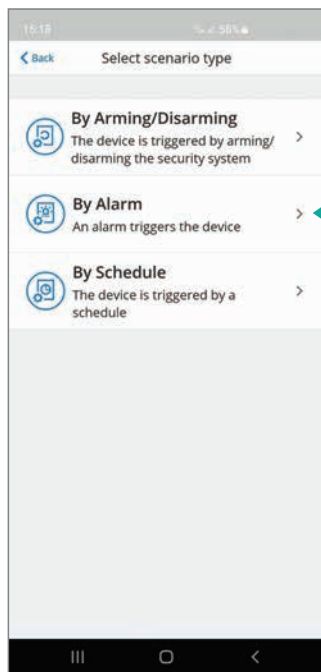
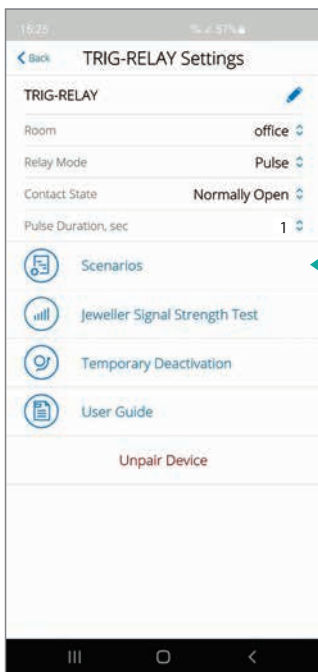
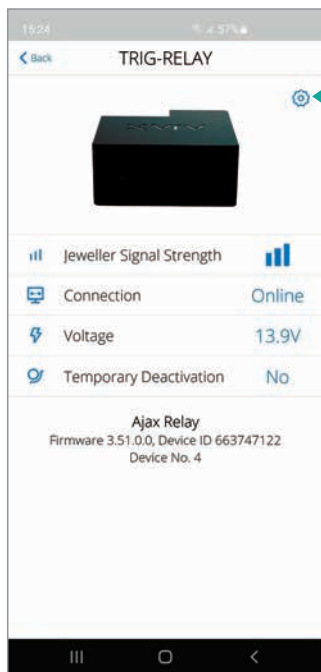
Through the components AJAX **SpaceControl**, **Button** and **DoubleButton** it is possible to operate the “Anti-panic” function even when the AJAX alarm control panel is disarmed.

Procedure:

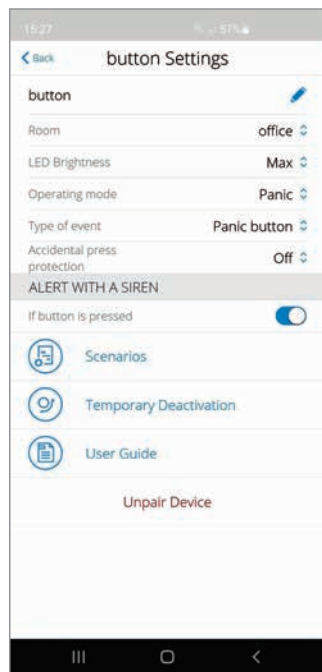
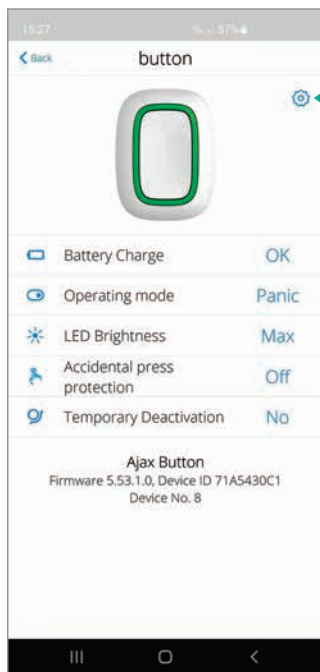
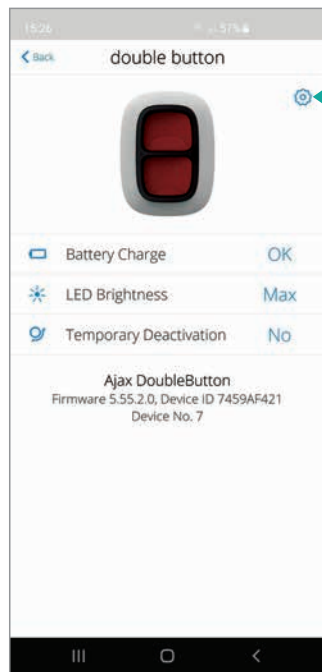
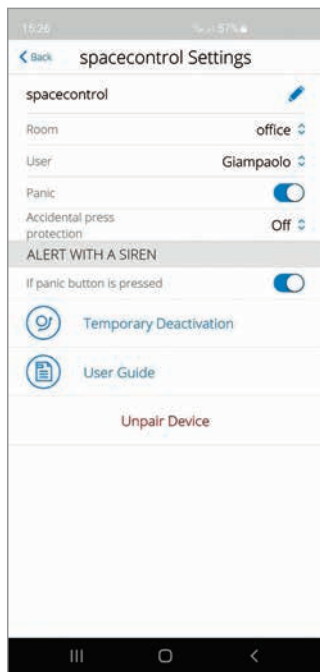
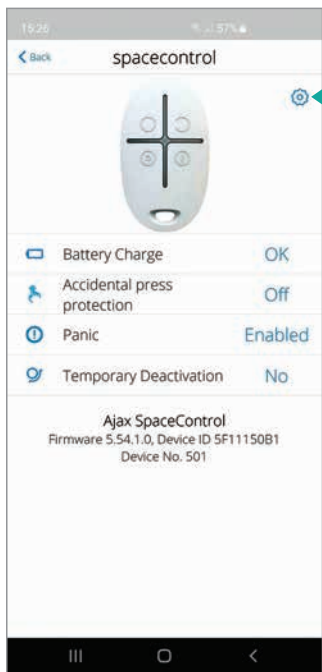
- 1 Configure on the component **ARM-RELAY** a new scenario “Panic” by setting the parameters described below



2 Configure a new "Panic" scenario on the TRIG-RELAY component by setting the parameters described below



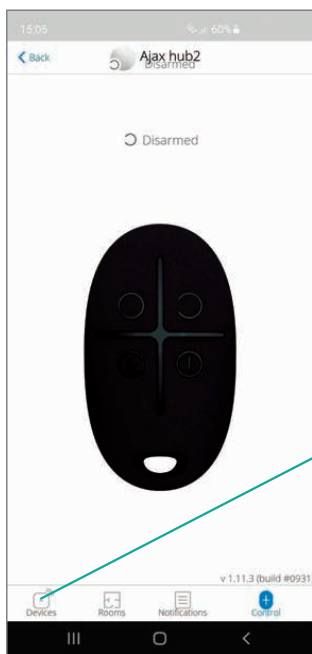
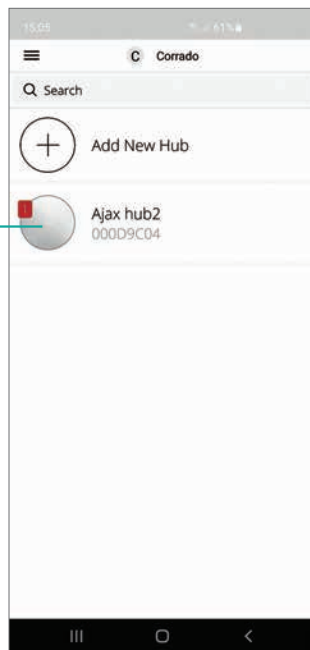
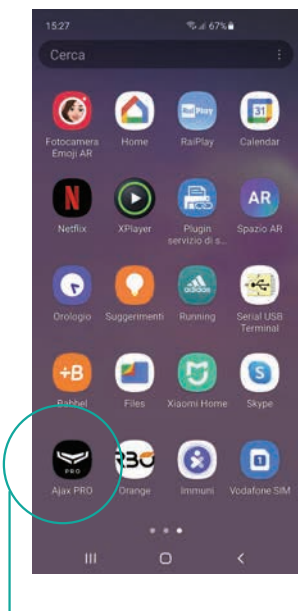
3 Depending on the operating device of the AJAX “Anti-panic” function installed, proceed with the relative configuration by setting the parameters following the screens below.



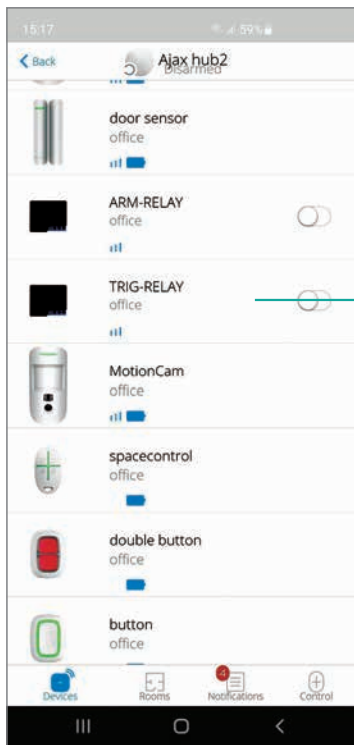
NOTE: by activating the PANIC function the ARM-RELAY will remain active leaving the fogging system armed. To restore it, it is needed to manually disarm it from the App or arm and disarm the alarm system.

MULTI CONFIRMATION SHOOT SETTINGS

- 1 Open the application and select the installed hub

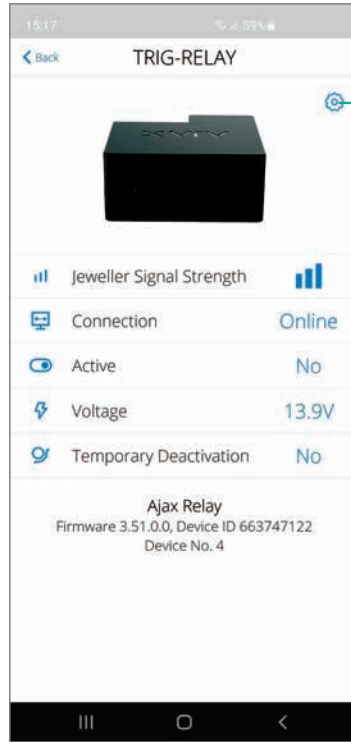


- 2 Select the icon at the bottom left "DEVICES"



3

Once the device "TRIG-RELAY" has been selected, the configuration screen will appear. Click on the wheel at the top right

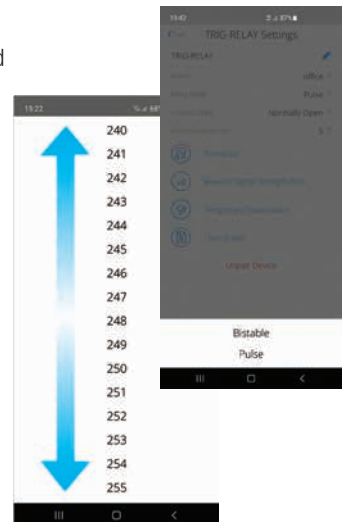
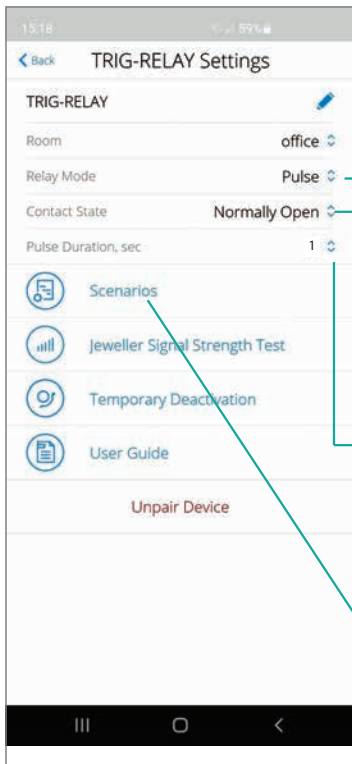


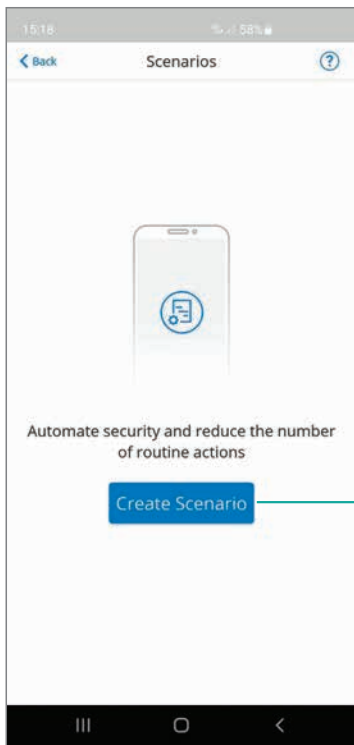
4

Make sure that you have selected the following parameters:

- **PULSE** mode
- contact status **NORMALLY OPEN**
- Pulse Duration, sec: from 0 to 255
Minimum certain value: 1 s (set the maximum value of 255 seconds if you do not want repeated shots)

Select the item "SCENARIOS"



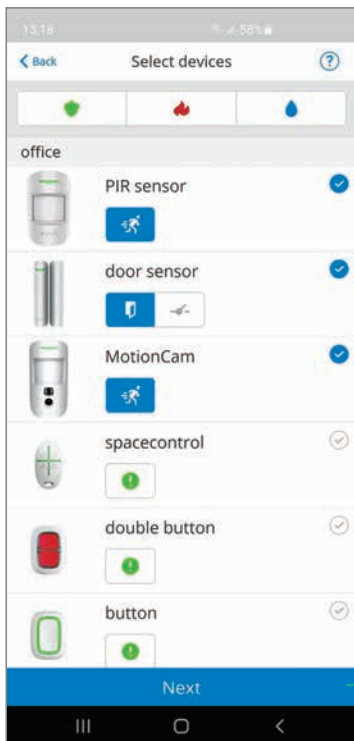
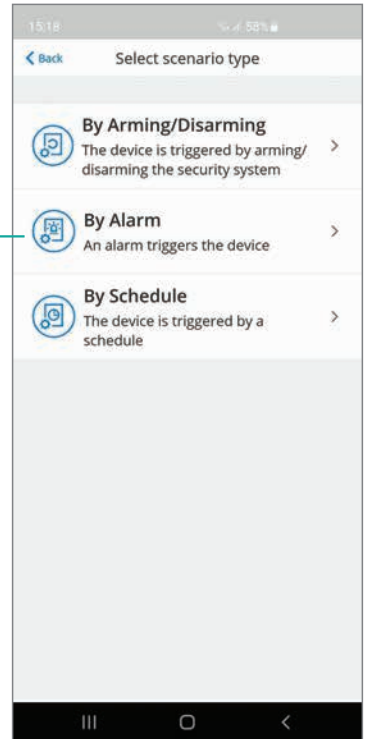


5

Select the item **"CREATE SCENARIO"**

6

Select the item **"BY ALARM"**



7

Select the sensors/devices that send **"SHOOTING SIGNAL"** in the event of an alarm and click on **"NEXT"**

< Back Scenario settings

MULTI CONFIRMATION SHOOT

Devices triggering the scenario

Any

All Selected

Select which devices trigger the scenario: any from the list, or all selected devices during the preset time

Max actuating time for all selected devices

11 mins 00 sec

08

09

10

11 00

12 01

13 02

14 03

Device action

Pulse

Save

8 Save with name **"MULTI CONFIRMATION SHOOT"**

9 Select the item **"ALL SELECT"**

10 Set the time (from 5 to 60 minutes) needed to activate all selected devices for shooting confirmation



AJAX
READY



UR Fog S.r.l.

Operation and delivery to: Via Toscana 38 - 10099 San Mauro T.se (Torino) - Italy

Legal Office: via Giacinto Collegno 11 - 10143 Torino - Italy

Phone +39 011 0133037 - Fax +39 011 0133005 - e-mail: sales1@urfog.com

C.F. / P. Iva 10724850010 - Reg. imprese TO - 1157030 - Numero Iscrizione Reg. AEE: IT19050000011412

Numero Iscrizione Reg. Pile Accumulatori IT19100P00005758 Cap. Soc. Euro 11.000,00 int. versati